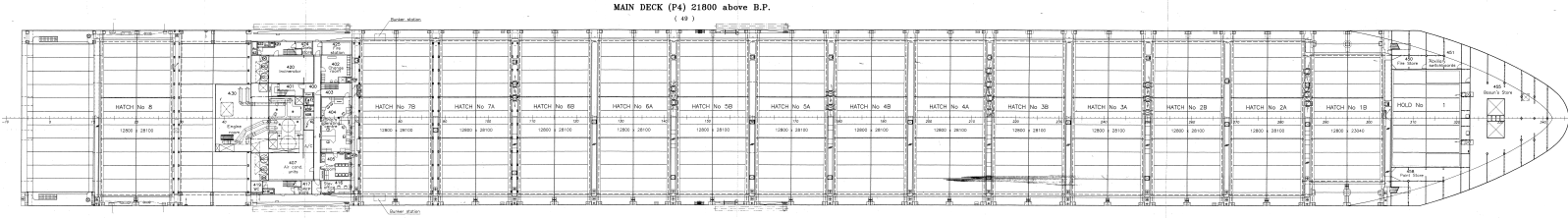


AFT MOORING DECK  
Ship: 18234/01-DZ



PRINCIPAL CHARACTERISTICS			
LENGTH OVER ALL	m	164.40	540.9
LENGTH BETWEEN PERPENDICULARS	m	157.10	513.8
BREADTH MOULED	m	23.20	76.1
DEPTH TO MAIN DECK	m	12.20	40.0
DECK AREA	m <sup>2</sup>	1500	15900
DECK AREA AT FORECASTLE	m <sup>2</sup>	430	4300
AT FORECASTLE	m <sup>2</sup>	5800	5800
AT AFT DECK	m <sup>2</sup>	2100	2100
AT FORECASTLE	m <sup>2</sup>	4440	4440
CONTAINER CAPACITY			
TOTAL		2100	2100
AT FORECASTLE		4440	4440
AT AFT DECK		5800	5800
MAIN ENGINE			
MANUFACTURE	TYPE	B 714 DE C	
SERIAL	MCR	43920 kW	
REVOL	REV	100 rpm <sup>1)</sup>	
LOAD AT SEA 33.3 MCR		39528 kW	
AT FORECASTLE		24.90 kW	
AT AFT DECK		27.18 kW	
COMPLEMENT TOTAL NO. OF BERTHS			
TOTAL		21	
AT FORECASTLE		4	
AT AFT DECK		17	
CLASS			
CSC-C 100-A-S-C CONTAINER SHIP MAN-C SOLAS II-2, Reg. 54 A-MSC-A.82			

STOCINA GYULA SA  
GENERAL ARRANGEMENT  
18234/1-DZ/0110-001