



IEVOLI SHUTTLE

S/V IEVOLI SHUTTLE

THE SHIP IS A SUPPLY VESSEL, DESIGNED TO GIVE ASSISTANCE TO OFF SHORE UNITS IN BLACK AND CASPIAN SEA.

THE SHIP IS DESIGNED TO CARRY:

- DISINFECTED LIQUID SEWAGE
- SEWAGE MUD
- FRESH WATER
- GAS-OIL (FLASH POINT ABOVE 60 DEGREES)

DEDICATED TANKS WITH DEEP-WELL PUMPS ARE INSTALLED.

THE SHIP IS ARRANGED WITH DOUBLE BOTTOM AND DOUBLE SKIN IN CARGO AREA, TWIN SCREW / TWIN ENGINE ARRANGEMENT, BOW THRUSTER, BULBOUS BOW AND FORWARD SUPERSTRUCTURE.

THE SHIP IS REINFORCED FOR NAVIGATION IN BRASH ICE AND TO OPERATE WITH COLD CLIMATE.

AIR CONDITIONING ACCOMODATION FOR 10 CREW IT IS ARRANGED.

MAIN DESCRIPTION

Built : Oct. 2009
Builder : SELAH Shipyard – Tuzla (Turkey)
Owner : Marnavi S.p.A. - Napoli
Classification : Rina Class + RMRS Class
RINA C, Supply Vessel, Special navigation – Mediterranean, Black and Caspian Sea, Ice class 1B, Clean Sea, Clean air, in water survey.

Port of registry : Aktau

Flag : Kazakhstan
Rina Number : 86826
RMRS Number : 90219
IMO Number : 9564437
Call Sign : UQT
Certificates : SOLAS 74 Certificates, Marpol (73/78 and amendments), LSA International Rules, Load Line Convention 69, Telecommunication / Radio International Convention.

MAIN DIMENSIONS

GRT : 532 tons
NET : 159 tons
Loa : 45.85 m
Lbp : 42.85 m
Breath Moulded : 9.97 m
Summer Load draft : 2.80 m
Depth Moulded : 4.00 m
Light Ship Weight : 612 tons
Deadweight : 350 tons (at summer draft)
Deck Cargo Area : 2 x Containers 20"
Deck Cargo strength : 2 t/m²

HULL AND SUPERSTRUCTURE

STEEL PLATES FOR HULL AND SUPERSTRUCTURE OF "A" GRADE.
BULB PROFILES AND FRAMES/LONGITUDINAL ALSO OF "A" GRADE.
THE VESSEL IS ARRANGED WITH:

- DOUBLE HULL
- FORE PEAK FOR BALLAST.
- TRANSVERSAL COFFERDAM BETWEEN GAS-OIL AND MUD TANKS AND BETWEEN SEWAGE/FRESH WATER.
- TWO SPADE RUDDERS.
- CENTRAL SKEG ON THE AFT.
- FENDERS (HALF PIPE TYPE) IN THE PARALLEL MID-BODY AND ON THE AFT.

PERFORMANCES

Speed : 10 knots
Consumptions (80%) : About 240kg/h (Diesel Oil)

CARGO PUMPS

Gasoil : 80 m³/h – 8 bars
Fresh water : 60 m³/h – 8 bars
Sewage : 55 m³/h – 70m
Mud : 35 m³/h – 70m

CAPACITIES

Fresh water : 100 m³ – 2x50
Sewage Mud : 88 m³ – 2x44
Gasoil (Pf > 60°) : 178 m³ – 2x89
Sewage : 160 m³ – 2x80

Ballast : 344 m³
Fresh water (for ship) : 11 m³
Gasoil (for ship) : 32 m³
Dirty Oil : 3,60 m³
Sludge : 2,70 m³
Bilge : 3,60 m³
Oily bilge Tank : 5,21 m³
Grey water : 4,10 m³

MACHINERY

Main engine's : 2 x 559 Kw
Builder : CATERPILLAR – Type: C32 ALERT
Shafting : 2 shafts x 4 blades propellers fix pitch type/each
Generator's : 2 x 150 Kw SCANIA Set
Bow thruster : Bow thruster of fixed pitch type, 4 blades, driven by an hydraulic motor fed by an hydraulic pump driven by one of two main engines, 80Kw – 1,5 tons
Rudder's : 2 x "Spade" type
Service : 2 x ATLAS Copco 8,5 bar, 5kw, 40m³/h
Compressor : 1 x ATLAS Copco
Air Drier : 1 x ATLAS Copco

OTHER MACHINERIES INSTALLED IN ENGINE ROOM

2 x Reverse Gearboxes, each with clutch and stand-by hydraulic pump.
2 x Fresh water circulation pump, one stand-by.
1 x General service bottle, 300 l/8 bar.
1 x Blige pump, as per Rules and one LP GS pump.
1 x Fire pump, (45m³/h, 6 bars).
1 x General Service pump (identical to fire pump) of HP type.
1 x Ballast pump, 100m³/h x 30 mWG.
1 x Gas-oil Purifier with pump.
1 x Gas-oil Transfer pump.
1 x Oil water separator.

One diesel driven pump is on board for emergency service.
Each cargo system is arranged with manifold on deck and valves manually operated.

Level indicators, one per cargo tank, above Main deck.

EQUIPMENTS INSTALLED IN THE FORE EQUIPMENT ROOM

- Hot water boiler (250l) with 3 x 6 electric heaters + circulating pump.
- Emergency fire pump, as per Rules, driven by a diesel engine, portable type.
- One Supply and one exhaust fan.
- Sewage treatment unit.
- Steam generator unit GMT12 (84 Kw)
- Fresh water unit (Calorifier + Hydrophor + Sterilizer)

ACCOMODATION

Cabins : 2 x 1 bed + 4 x 2 beds
Mess room : Fitted
Galley : Fitted
Laundry : Fitted
Hospital : Fitted

DECK EQUIPMENT

Capstan / Windlass : 2 x 3 ton (stern) + 2 x 3 ton windlass / capstan
Crane : 1 x 2 ton at 10m
F.R.B. : 1 x 6 persons, Length: 4,45m, Eng: 25 Hp
Life Rafts : 2 x 10 pers. RFD

NAVIGATION EQUIPMENT

Radar X band : CONSILIUM SELUX ST-250, 19 1" TFT – (ARPA function)
Radar S band : CONSILIUM SELUX ST-340, 12ft (ARPA function)
GPS : SAAB R4 DGPS
Echo-sounder : SKIPPER – GDS 101
GMDSS : Inmarsat C – SAILOR 150W SSB/DSC (Area A1+A2+A3)
SSAS : 403000SSA – 00500 SAILOR mini-C
SART : 2 x SART SAILOR SART II
Speed log : CONSILIUM SAL R1a
Wind Speed/Direction : DEIF
Gyro pilot : SPERRYNAVIPILOT 4000
Navtex : ICS NAVTEX NAV 7
Gyro compass : SPERRY NAVIGAT X MK1 (type: G-TML)
AIS : SAAB R4 AIS
LRIT : (included in GMDSS)
Magnetic Compass : SPERRY NAVIPOL 1
Radio VHF : 2 x SAILOR RT5022 DSC
Radio VHF Portable : 3 x SAILOR 40352B
VHF Portable (Ship use) : 2 x SAILOR sp3530 – Intrinsically safe
Inmarsat C : 2 x SAILOR TT3000E
EPIRB : SAILOR TT4062-D (406Mhz)
Weather Chart Plotter : FURUNO
Satellite Phone : Inmarsat C
Satellite Fax : Inmarsat C
P.C. : Fitted (Printer, Scanner, Copies machines)

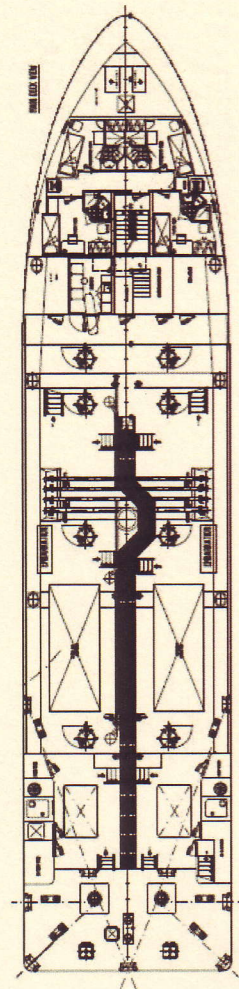
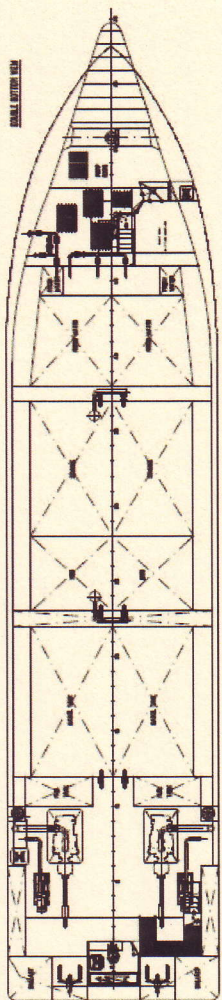
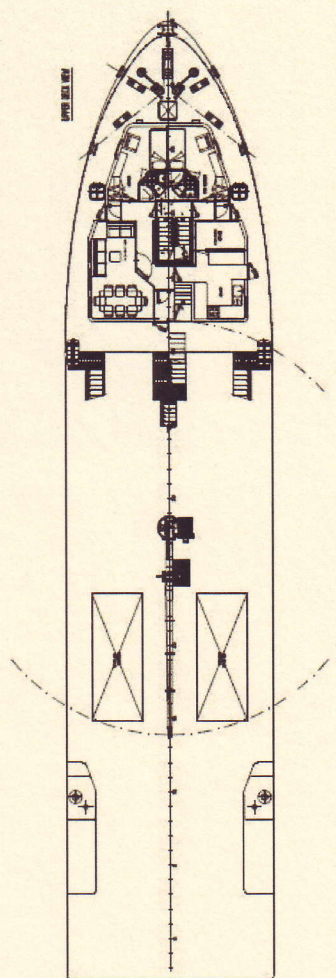
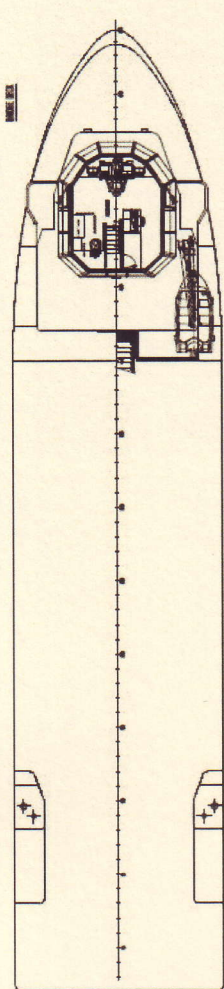
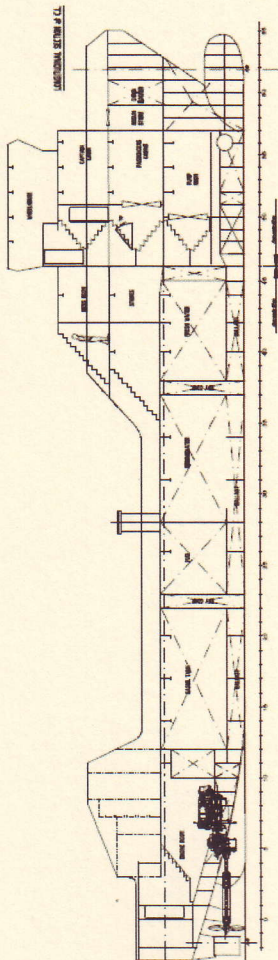
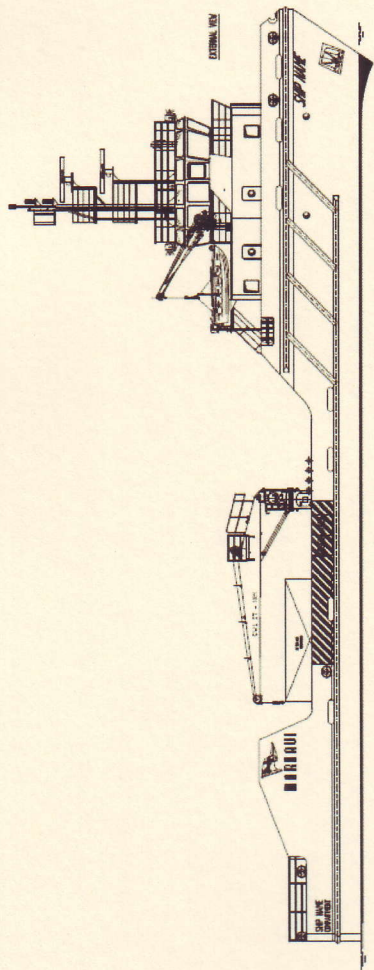
OTHER INFORMATION

Frigo Capacities : Domestic Type. Freezers: 2 x 220lt, Refrigerators: 2 x 220lt

This specification is subject to alteration without prior notice



Ievoli Shuttle - Supply Vessel



Whilst care has been taken in the preparation of this document, the data and/or information referred to herein are purely indicative and are not contractually binding. They must be checked with reference to the specific operations and are subject to change. No liability is accepted by the owners for any errors which may exist in this document.



MARNAVI S. P. A.
TRASPORTI MARITTIMI