

C-TYPE

E-mail
projects.cht.cph@clipper-group.com

Web
clipper-group.com



BUILDERS	Zhonghua Shipyard, Shanghai, China
FLAG	Bahamas
HOME PORT	Nassau
COMMERCIAL MANAGER	Clipper Projects A/S
CLASS	Lloyd's Register +1A1, General Cargo Carrier, Container Carrier, Ice Class IC, EO, W1-0C, 1B(+)

THE FLEET	BUILT	THE FLEET	BUILT
Clipper Century***	2002	Clipper Cristobal*	1999
CEC Copenhagen***	2001	Clipper Champion*	1998
Clipper Concord**	2000	Clipper Commander*	1998

TONNAGE

- DWT: about 8,874mt (without tweendeck)
- Weight of tweendeck pontoons 245mt
- GT/NT: 6,714/2,890
- Suez: 6,656/4,861

TYPE

- Single screw steel multipurpose vessel
- Flush tweendeck removable
- Bow thruster & "Becker" rudder

DIMENSIONS

- LOA: 100.50m
- Lpp: 95.0m
- Beam: 20.40m
- Draft Summer SW: 8.20m
- Air draft less draft aft: 42.5m

CAPACITY

- Grain/Bale:
- 371,863ft³/10,530m³ without tweendeck
 - 345,165ft³/9,774m³ with tweendeck
 - 783m² in lower hold platforms lower hold 97m²
 - 946m² in tweendeck platforms tweendeck 32m²
 - 650 TEUS, without tweendeck pontoons onboard

HEIGHTS

- Lower hold – Tweendeck: 5.80m
- Tweendeck – Hatch cover: 5.0m
- Lower hold – Hatch cover: 11.67m
- Vessel built from 1999 and onwards tweendeck adjustable in two heights, excluding tweendeck pontoons in Bay 1 + Bay 3 (only lower position). See drawing overleaf

HATCH

- One large hatch 64.40 x 15.30m
- MacGregor non sequential pontoon hatch cover

HOLD

- One box-shaped doubleskinned cargo hold 64.40 long x 15.20m wide x 11.75m high
- Steel floored tanktop with flush container shoes
- The hold narrows in the fore ship stepwise in container dimensions
- The container platforms in the fore part of the hold should be noted
- Fitted with a complete set of loose tweendeck steel pontoons

HOLD EQUIPMENT

- 25 air changes per hour (based on empty hold)
- CO₂ fitted in cargo hold
- Cargo hold can be divided into four sections for cargo separation

CRANES

- Two electro-hydraulic cranes mounted in port side. Combinable up to 300mt for 150mt cranes and for 200mt cranes up to 400mt. Subject to dimensions and hook points of units to be carried
- Standard rigging of the cranes is 36mt.
- Cranes fitted with 90mt and 150mt or 200mt heavy lift brackets and 6mt or 32mt SWL auxiliary winch.
- Vessels are fitted with spreader except for Clipper Cristobal.

CRANE CONFIGURATIONS/SWLS:

- * 6mt auxilliary winch + 36mt + 90mt H/L +150mt H/L
- ** 32mt auxilliary winch + 36mt + 90mt H/L +150mt H/L
- ***32mt auxilliary winch + 36mt + 90mt H/L +200mt H/L

MAIN ENGINE

- Wärtsila 8L46B 7,800kW/500rpm with gear (148rpm)

GENERATORS

- 1 shaft generator (1,800rpm)
- 3 diesel generators of 900kW
- 1 emergency generator of 108kW

SPEED AND CONSUMPTION

- About 16.5 knots on 28mt IFO 380cst
- Port consumption idle: 1.6mt MGO
- Port consumption gear working: 4.4mt MGO

TANK CAPACITY

- Heavy fuel oil (IFO): 881m³
- Diesel oil (MGO): 113.5m³
- Water ballast: 3,035m³
- Fresh Water: 59m³

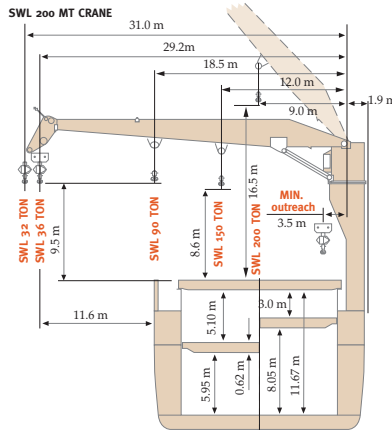
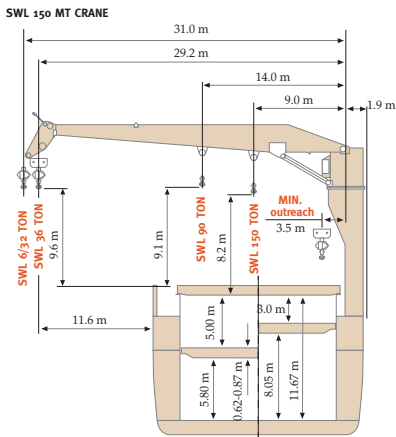
REEFER PLUGS

- 24 reefer plugs in hold
- 82 reefer plugs on deck

CONTAINER EQUIPMENT

- Vessel is fitted with a full set of container lashing equipment
- Vessel is fitted with a 20' spreader and a 40' spreader for container handling

LOAD DISTRIBUTION	TANK TOP	TWEENDECK	HATCH COVER	MAIN DECK
Uniform load (mt/m)	15	3	2-3	2-3
Stack load TEU (mt)	100	-	50	60
Stack load FEU (mt)	130	-	65	80



CRANE CAPACITY: 150 MT VERSION					CRANE CAPACITY: 200 MT VERSION				
SWL	Outreach		Clearance *		SWL	Outreach		Clearance *	
	Minim.	Maxim.	Maxim.	Minim.		Minim.	Maxim.	Maxim.	Minim.
6/32mt, aux winch	5.0m	31.0m	39.6m	9.6m	32mt,aux winch	5.0m	31.0m	39.6m	9.6m
36mt	3.5m	29.2m	36.4m	8.8m	36mt	3.5m	29.2m	36.4m	8.8m
90mt	4.0m	14.0m	22.0m	9.1m	90mt	5.1m	18.5m	26.0m	8.5m
150mt	3.5m	9.0m	17.0m	8.2m	150mt	3.5m	12.0m	19.5m	8.2m
					200mt	3.5m	9.0m	19.5m	16.0m

* Clearance between hook and hatch

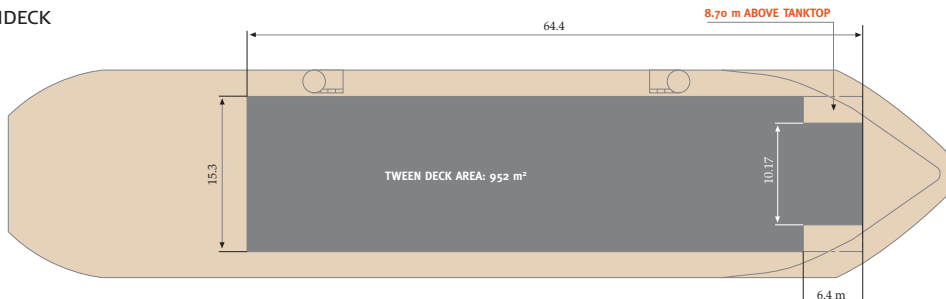
LOCATION	TEU	FEUS + TEUS
Deck and hatch	430	210 + 10
Cargo hold	220	106 + 8
Total	650	316 + 18

CONTAINER LOAD INTAKE

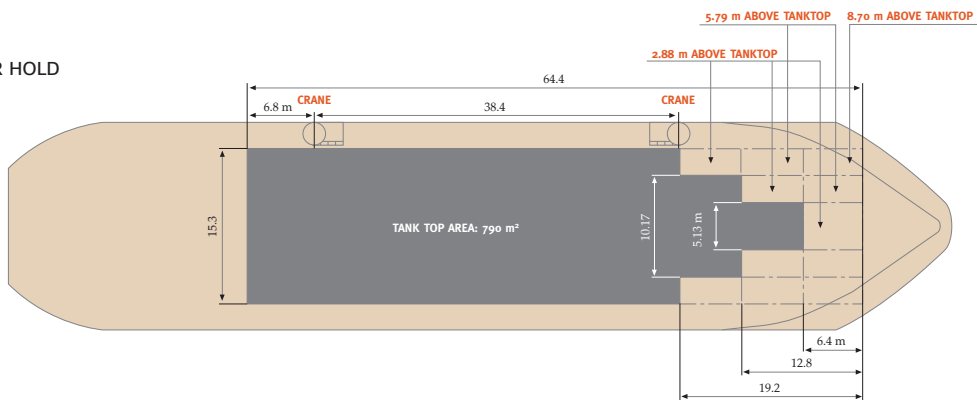
CONTAINER LOAD					
Homogeneous	14mt	16mt	18mt	20mt	22mt
Intake TEUs	409	393	378	357	342

Intake of TEUs, ISO 20'x 8'x 8', weight in metric tons, with 75% bunkers onboard, ballast needed and with tweendeck steel pontoons ashore

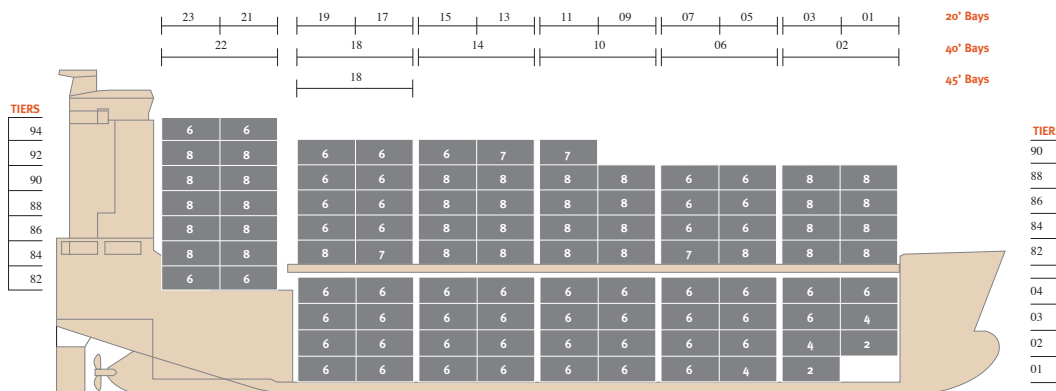
TWEENDECK



LOWER HOLD



1 HOLD CONFIGURATION



650 TEUS