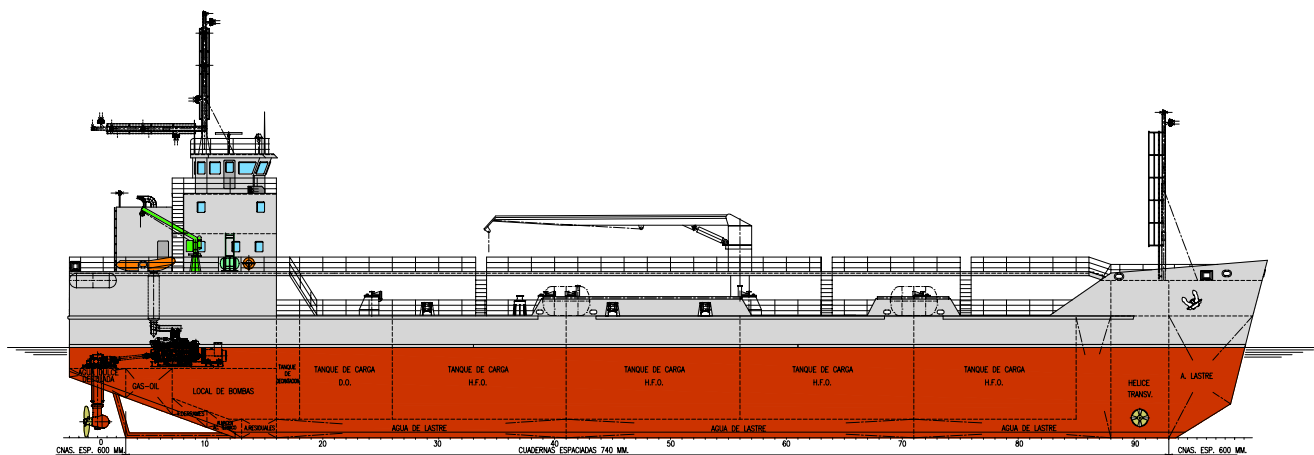


### BUNKERING TANKER OF 4600 DWT (DOUBLE HULL)

Yard Hull 630



#### MAIN PARTICULARS:

Length o.a. ....	76.50 metres
Length p.p. ....	73.25 metres
Breadth mld. ....	17.00 metres
Depth mld. ....	7.55 metres
Draught, design ....	5.60 metres
Gross tonnage ....	2,700 GT.

#### CARGO EQUIPMENT:

GO Cargo pumps .....	2 x 200 m <sup>3</sup> /h., 8 bar, deep well
HFO Cargo pumps ...	4 x 500 m <sup>3</sup> /h., 8 bar, deep well
Cargo heating boiler ..	1 x 560,000 Kcal/h, thermal oil
Hose handling crane. ..	1 x 1,5 t. at 16 m.
Blending equipment.	

#### RULES:

Class: Lloyd's Register of shipping  
 Notation: +100 A1 Double Hull Oil Tanker ESP + LMC, CCS (Flash point above 60°C),  
 "Special Services/Bunkering Ship"

MARPOL, SOLAS, COLREG

#### TANK CAPACITIES:

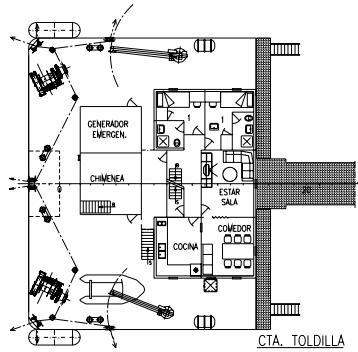
N. Cargo tanks (GO) .....	2
N. Cargo tanks (HFO) .....	8
Cap. Cargo tanks (GO) .....	520 m <sup>3</sup>
Cap. Cargo tanks (HFO) .....	4,050 m <sup>3</sup>
Slop tanks .....	130 m <sup>3</sup>
Ballast tanks .....	2,400 m <sup>3</sup>
Deadweight .....	4,600 t.

#### MACHINERY

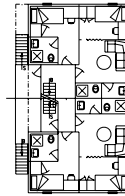
Propulsion plant .....	2 x 1,000 kW.
Propellers .....	2 Azimuth
Bow thruster .....	1 x 300 kW.
Shaft generators .....	2 x 900 kVA., 400 V., 50 Hz.
Aux. Generators .....	1 x 500 kVA., 400 V., 50 Hz.
	1 x 180 kVA., 400 V., 50 Hz.
Emerg. Generator .....	1 x 180 kVA., 400 V., 50 Hz.

# BUNKERING TANKER OF 4600 DWT (DOUBLE HULL)

## Yard Hull 630



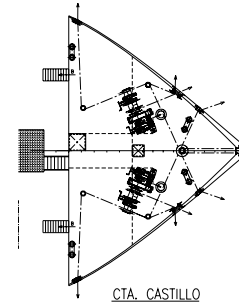
CTA. TOLLILLA



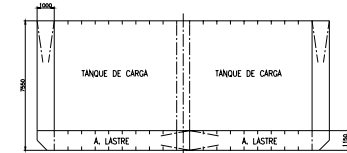
CTA. TRIPULACION



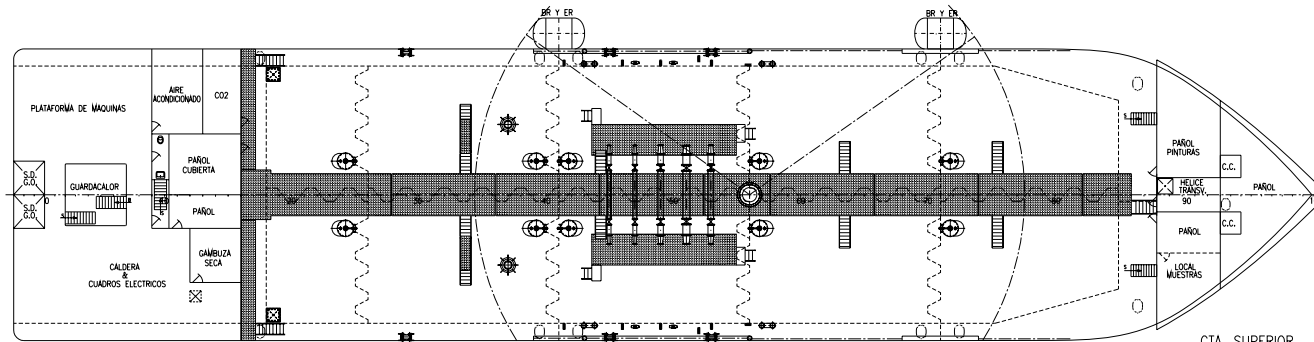
CTA. PUENTE



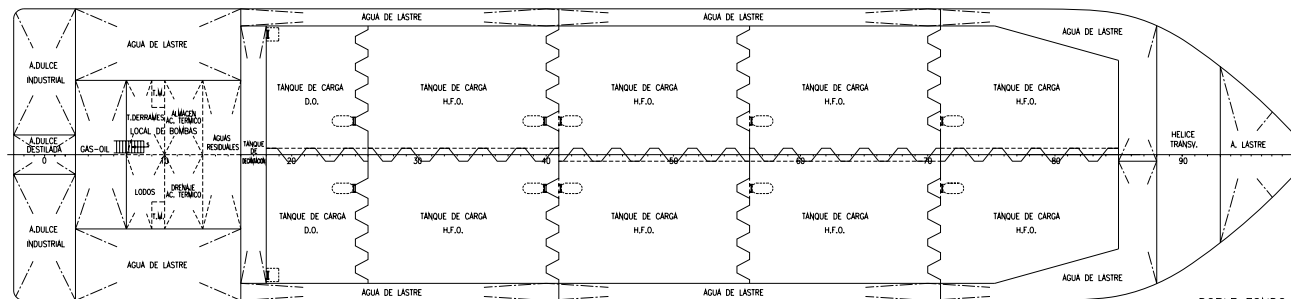
CTA. CASTILLO



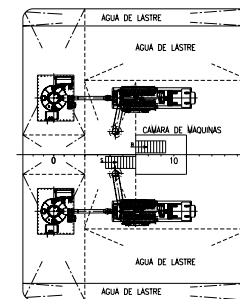
SECCION MAESTRA



CTA. SUPERIOR



DOBLE FONDO



CTA. MAQUINAS

### CARACTERISTICAS

ESLORA TOTAL	76,50 M.
ESLORA ENTRE PP.	73,25 M.
MANGA DE TRAZADO	17,00 M.
PUNTAL	7,55 M.
CALADO DE TRAZADO	5,60 M.
TRIPULACION	6 PERSONAS